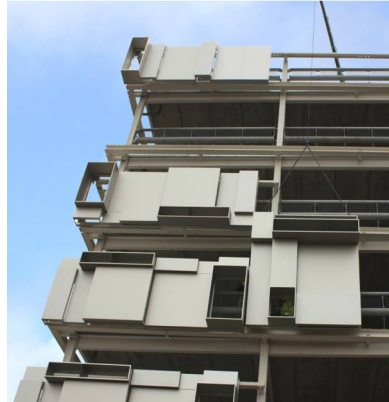


# Case Study 26

**Location:**

Eastside, Birmingham

**Description:**

Exterior cladding, glazing and ramp barriers for multi-storey car park

**Client:**

Birmingham City Council

**Architect:**

Urban Design - Birmingham City Council's in-house design team and Hill Cannon UK

**Main Contractor**

Thomas Vale Construction

**Cladding Manufacturers:**

Ash & Lacy; Kingspan

**Installed by:**

Berry Systems

## Berry

SYSTEMS

**The look you want  
the protection you need**

Springvale  
Business & Industrial Park  
Bilston, Wolverhampton  
WV14 0QL. UK

T: +44 (0)1902 491100  
F: +44 (0)1902 494080

[sales@berrysystems.co.uk](mailto:sales@berrysystems.co.uk)  
[www.berrysystems.co.uk](http://www.berrysystems.co.uk)

A member of the Hill & Smith  
Infrastructure Products Group

# Clad All Over at Birmingham Eastside

Case Study

26

The Cardigan Street multi-storey car park is a key element of the Birmingham Eastside redevelopment and has a capacity of 975 cars.

Berry Systems won seven of the cladding packages put out to tender by main contractor Thomas Vale. Following the original schematic design by Hill Cannon UK and Urban Design, and working closely with sister company to Berry Systems, Ash & Lacy, Berry was able to supply and install over 1900m<sup>2</sup> of a customised version of AshTech™ rainscreen cladding. It was produced in a 3D geometric layout incorporating a number of blue acrylic 'lightpod' sections.

These not only provide a colour contrast with the silver anodised cladding but also allow interior light from the car park to create a stunning light effect from the external view. The main external cladding was completed by the use of expanded metal aluminium screen on the ground floor and Kingspan KS1000FL architectural wall system to part of two elevations. In addition standard Ash-Tech™ rainscreen cladding together with glazed curtain walling is being installed to the two stair core towers servicing the car park.

Thomas Vale Construction is due to complete the £10.1million project by April 2011.



## Synopsis:

Exterior cladding, curtain walling and ramp barriers for new multi-storey car park within the Birmingham Eastside redevelopment project.

## Specification:

- 1900m<sup>2</sup> of custom designed 3D Ash-Tech™ rainscreen cladding
- 450m<sup>2</sup> of Ash & Lacy expanded metal façade
- 1000m<sup>2</sup> of Kingspan KS1000 FL architectural wall system
- 200m of Berry Beam ramp barrier mounted on RB1 Spring Steel Buffers complete with integral handrail and anti-climb mesh
- 200m<sup>2</sup> Kawneer AA100 curtain walling
- 300m<sup>2</sup> AshTech™ rainscreen cladding
- 700m<sup>2</sup> acrylic lightpod units

## Location:

Eastside, Birmingham

## Description:

Exterior cladding, glazing and ramp barriers for multi-storey car park

## Client:

Birmingham City Council

## Architect:

Urban Design - Birmingham City Council's in-house design team and Hill Cannon UK

## Main Contractor

Thomas Vale Construction

## Cladding Manufacturers:

Ash & Lacy; Kingspan

## Installed by:

Berry Systems

**Berry**  
SYSTEMS

The look you want  
the protection you need

Springvale  
Business & Industrial Park  
Bilston, Wolverhampton  
WV14 0QL. UK

T: +44 (0)1902 491100  
F: +44 (0)1902 494080

sales@berrysystems.co.uk  
www.berrysystems.co.uk

A member of the Hill & Smith  
Infrastructure Products Group